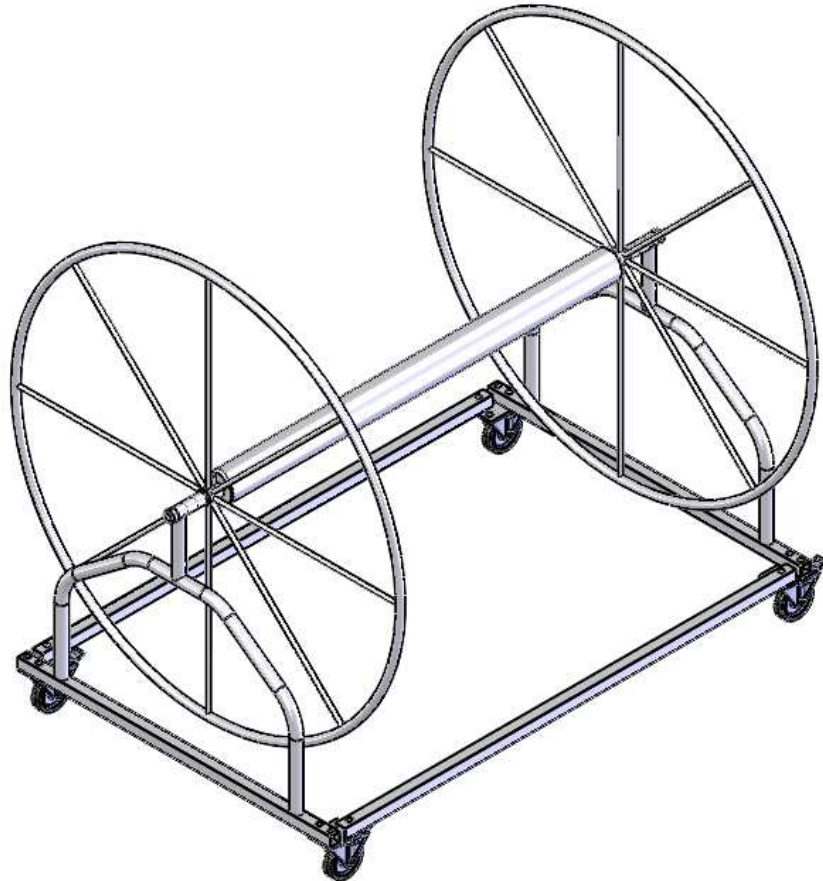


# XL Capacity Lane Line Reel

## ASSEMBLY INSTRUCTIONS



CORPORATE HEADQUARTERS  
WESTERN SALES AND MANUFACTURING PLANT  
P.O. Box 400 • 1017 SW Berg Parkway  
Canby, Oregon 97013  
Phone: (503) 266-2231 • Fax: (503) 266-4334  
[www.srsmith.com](http://www.srsmith.com)

## Table of Contents

<u>Topic</u>	<u>Page #</u>
Introduction.....	2
Application.....	2
Parts List.....	3
Assembly Instructions.....	4
Assembled Reel Structural .....	10

### **INTRODUCTION**

---

**THE XL CAPACITY LANE LINE REEL IS DESIGNED AND MANUFACTURED FOR USE ON INGROUND SWIMMING POOLS ONLY. PROPER AND COMPLETE ASSEMBLY, USE AND SUPERVISION IS ESSENTIAL FOR PROPER OPERATION AND TO REDUCE THE RISK OF ACCIDENT OR INJURY.**

**\*\*IMPORTANT\*\***

Check entire boxes and inside all packing materials for parts. Before beginning assembly, read the instructions and identify parts using the figures and parts listed in this document. It is critical that all parts be carefully inspected by the installer prior to installation to ensure that no damage occurred in transit and that a damaged part is not used. Proper installation cannot be overstressed, as an improper installation voids S.R. Smith's warranty and may affect the safety of the user.

### **APPLICATION**

---

The XL Capacity Lane Line Reel is designed to remove, store, and place lane lines in a competitive pool environment. It is important to follow these steps when using the product:

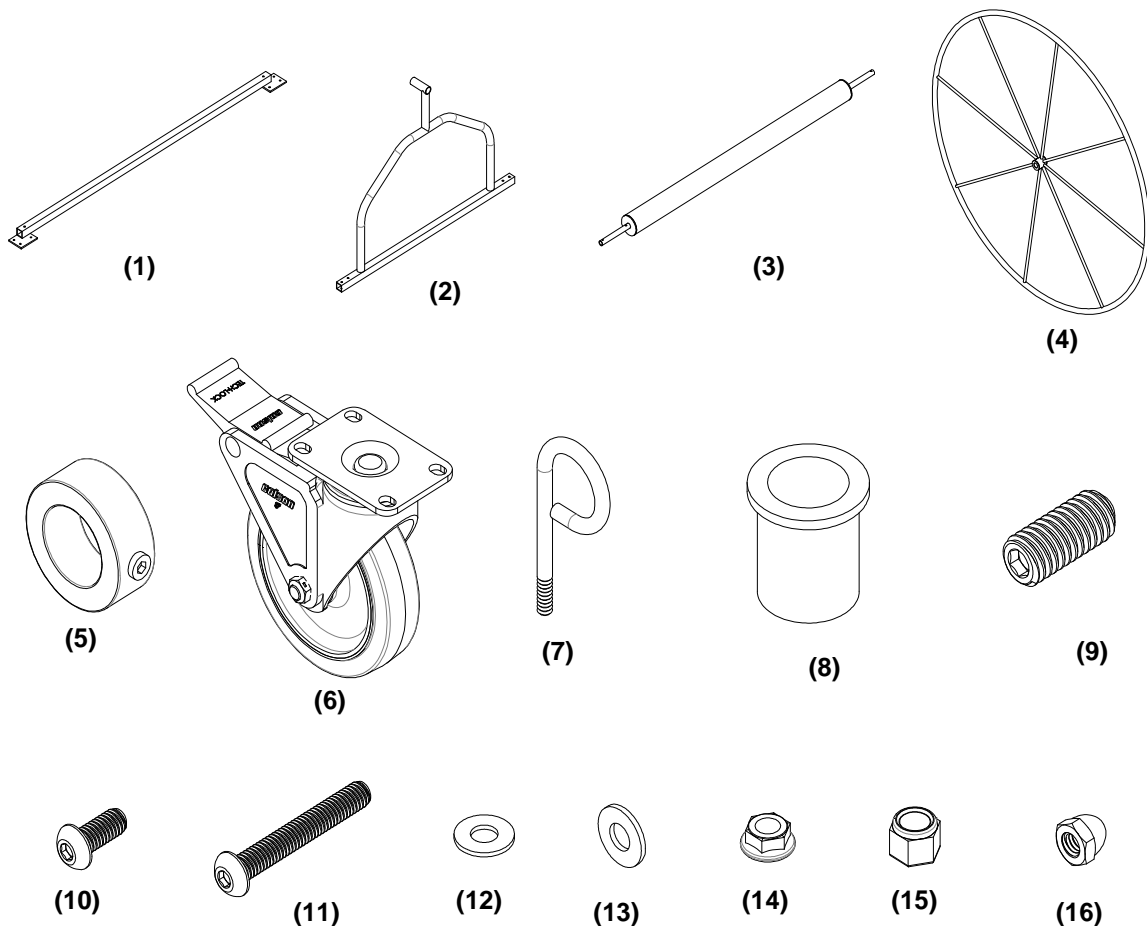
Always lock the casters when removing, storing, or placing the lane lines

For safety, always have a minimum of two people involved when moving the reel

The lane line reel should never be operated for removal, storage, or placing the lane lines on a sloped surface

ITEM #	PART #	DESCRIPTION	QTY.
1	36210	Side Support	2 ea.
2	36220	End Support	2 ea.
3	36230	Spool	1 ea.
4	36240	Wheel Hub	2 ea.
5	36251	Nylon Shaft Collar w/ Set Screw SS	2 ea.
6	36252	5" Locking Casters	4 ea.
7	36253	Eye Hook SS	2 ea.
8	36254	Axle Bushing	4 ea.
9	36256	5/16"-18 x 3/4" Brass Set Screw	2 ea.
10	5-105-75	5/16" x 3/4" Button Head Cap Screw SS	4 ea.
11	5-105-225	5/16" x 2 1/4" Button Head Cap Screw SS	12 ea.
12	05-625	5/16" Nylon Washer	16 ea.
13	5-303	5/16" Flat Washer SS	16 ea.
14	5-658	5/16" Flanged Nut SS	16 ea.
15	5-141	3/8" Lock Nut SS	2 ea.
16	36257	5/16"-18 Nylon Acorn Washer	2 ea.

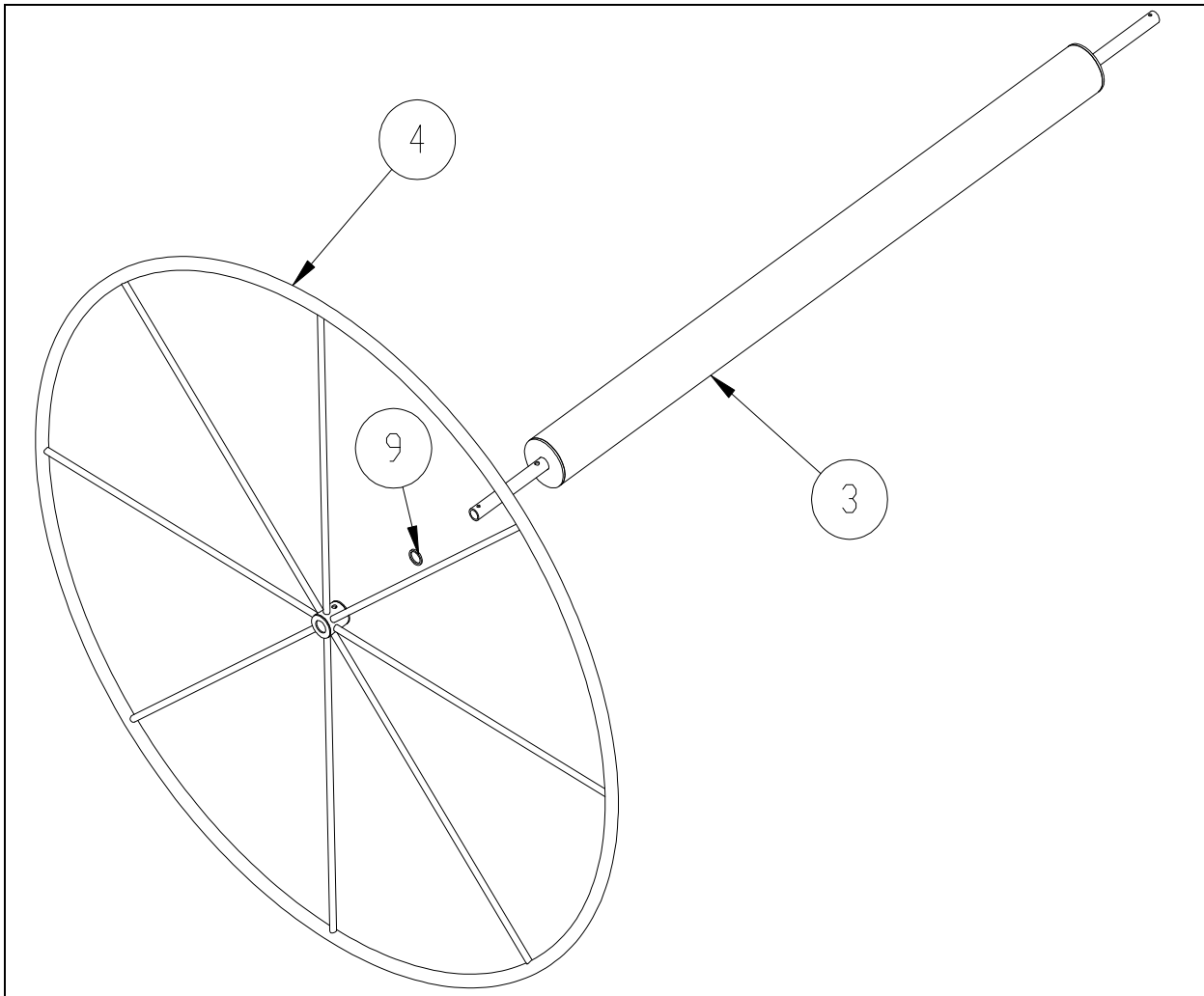
## XL LANE LINE REEL PARTS LIST



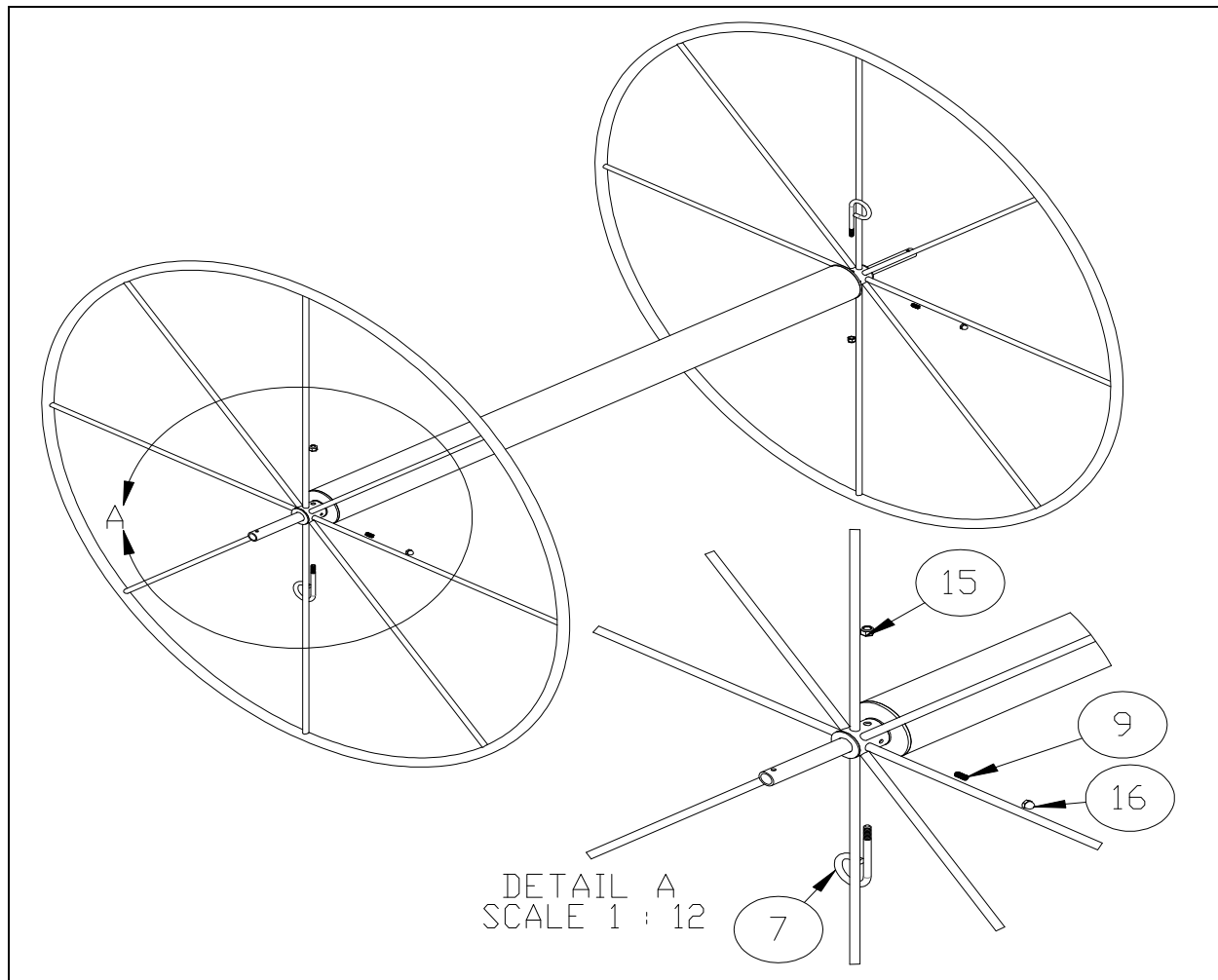
### Tools Required:

1. Ratchet handle
2. 9/16" socket
3. 1/2" socket
4. 3/16" allen wrench
5. 5/32" allen wrench
6. Anti-seize

## ASSEMBLY INSTRUCTIONS

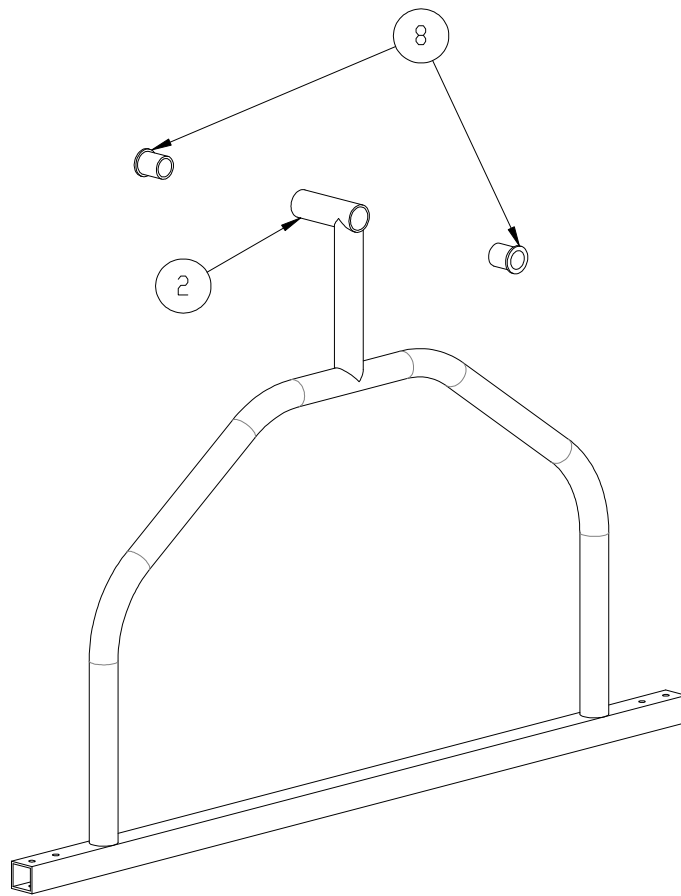


- 1) The lid of the cardboard box that the unit was shipped in works as an ideal surface to assemble the lane line reel. First, slide the O-Ring (9) over the spindle arm of the Spool (3), and then slide the Wheel Hub (4) over same side of the Spool (3). Repeat this on the other end of the spool. The finished assembly should not be placed on the ground because this can damage the powder coating.

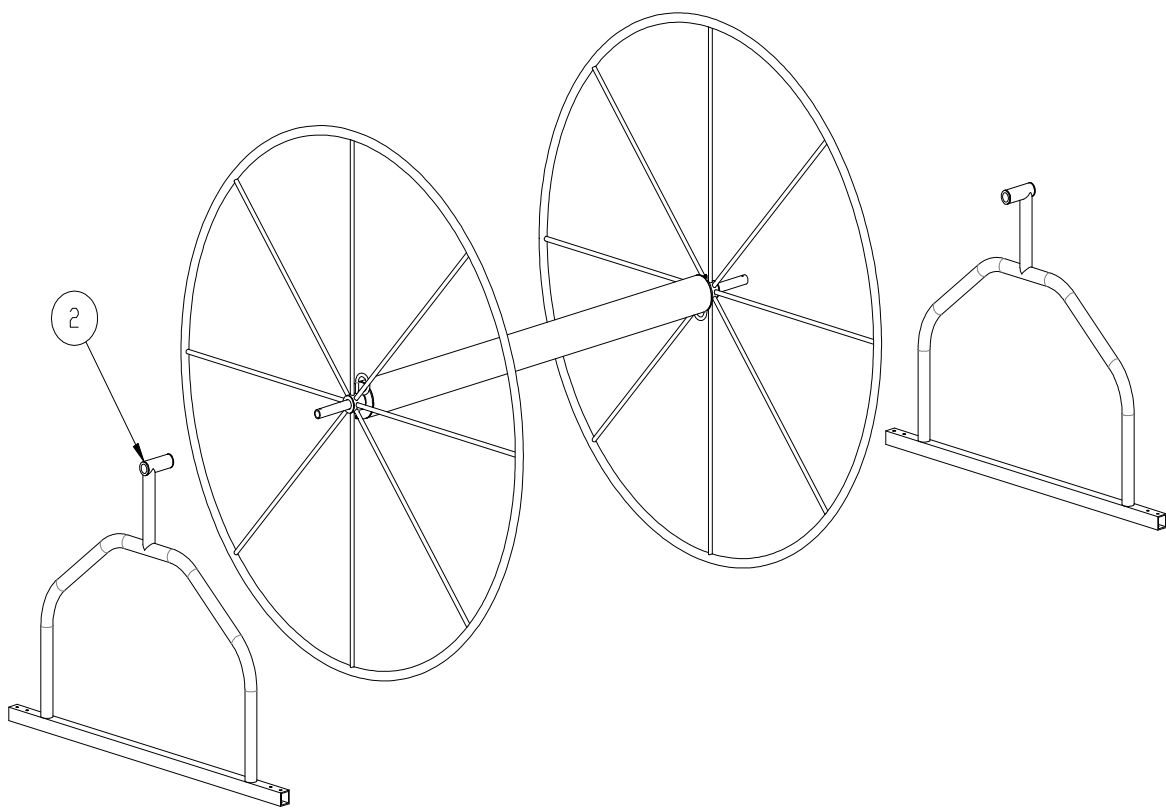


- 2) Next, take the two Eye Hooks (7) and place them through the aligned holes in the Wheel Hub (4) and Spool (3). The Eye Hooks (7) should be aligned so that they face in opposite directions to insure easy use. Apply the anti-seize provided to the threads of the Eye Hook SS (7). Secure the Eye Hook SS (7) with the 3/8" Lock Nut SS (15). Then take the 5/16"-18 Brass Set Screw (9) and tighten into the threaded hole in the Wheel Hub (4) using the 5/32" Allen wrench until tight. Hand tighten the 5/16"-18 Nylon Acorn Nut (16) over the 5/16"-18 Brass Set Screw (9). Repeat on the other Wheel Hub (4).

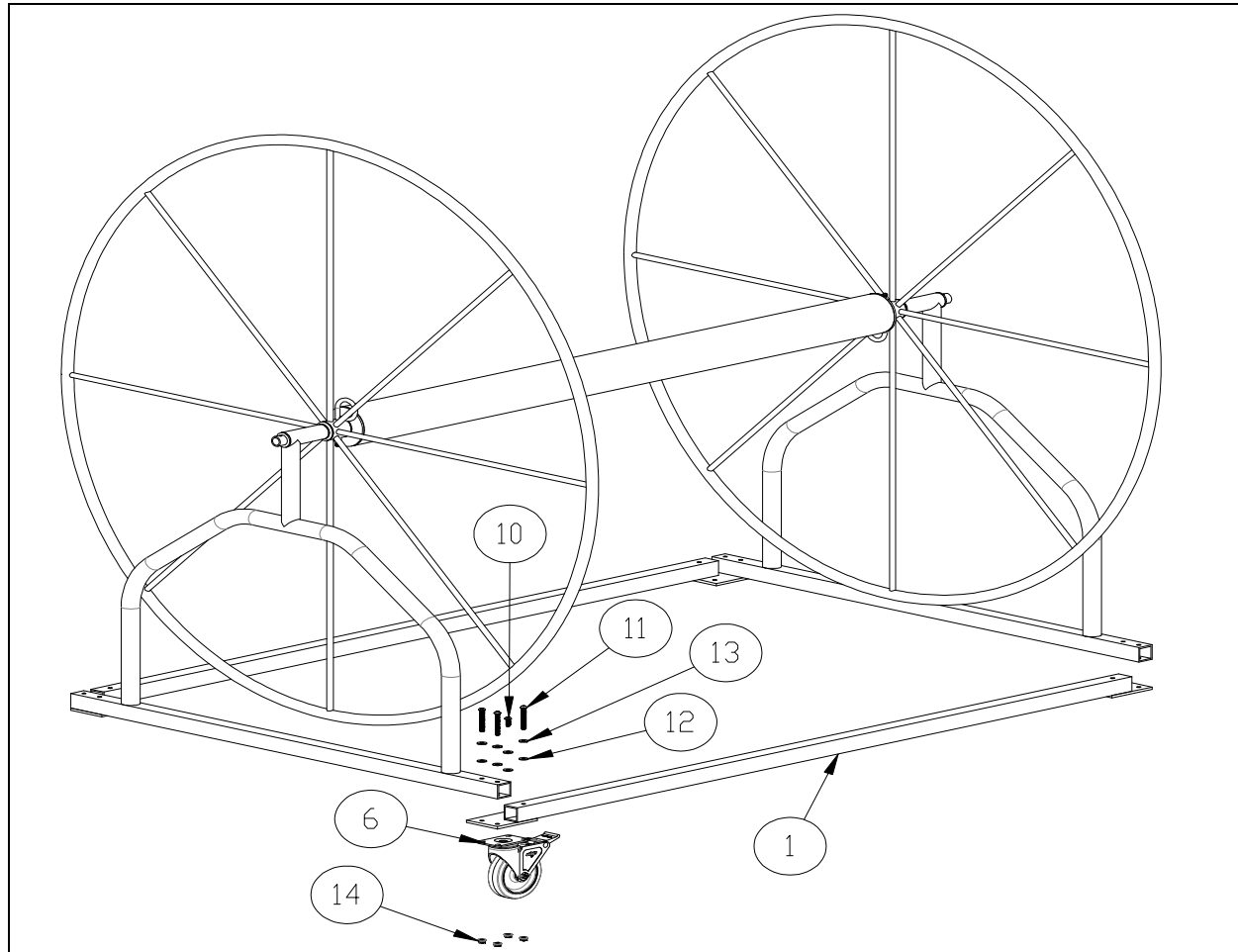
**REMEMBER TO USE ANTI-SEIZE WHENEVER ASSEMBLING STAINLESS STEEL HARDWARE.**



3) Take the two Axle Bushings (8) and insert them into both sides of the axle housing at the top of the End Support (2). Do this on both End Support (2) parts.



4) Slide the End Support (2) with Axle Bushings (8), from Step 3, over the spindle arm of the Spool (3). Repeat on the other end of the Spool (3). It is important that the End Support (2) is oriented as shown above. The long portion of the axle housing should face toward the Wheel Hubs (4).



5) To finish constructing the base, take the Side Support (1) and place the welded plates under each of the End Support (2) pieces. Then bolt through the frame and Caster (6) as shown:

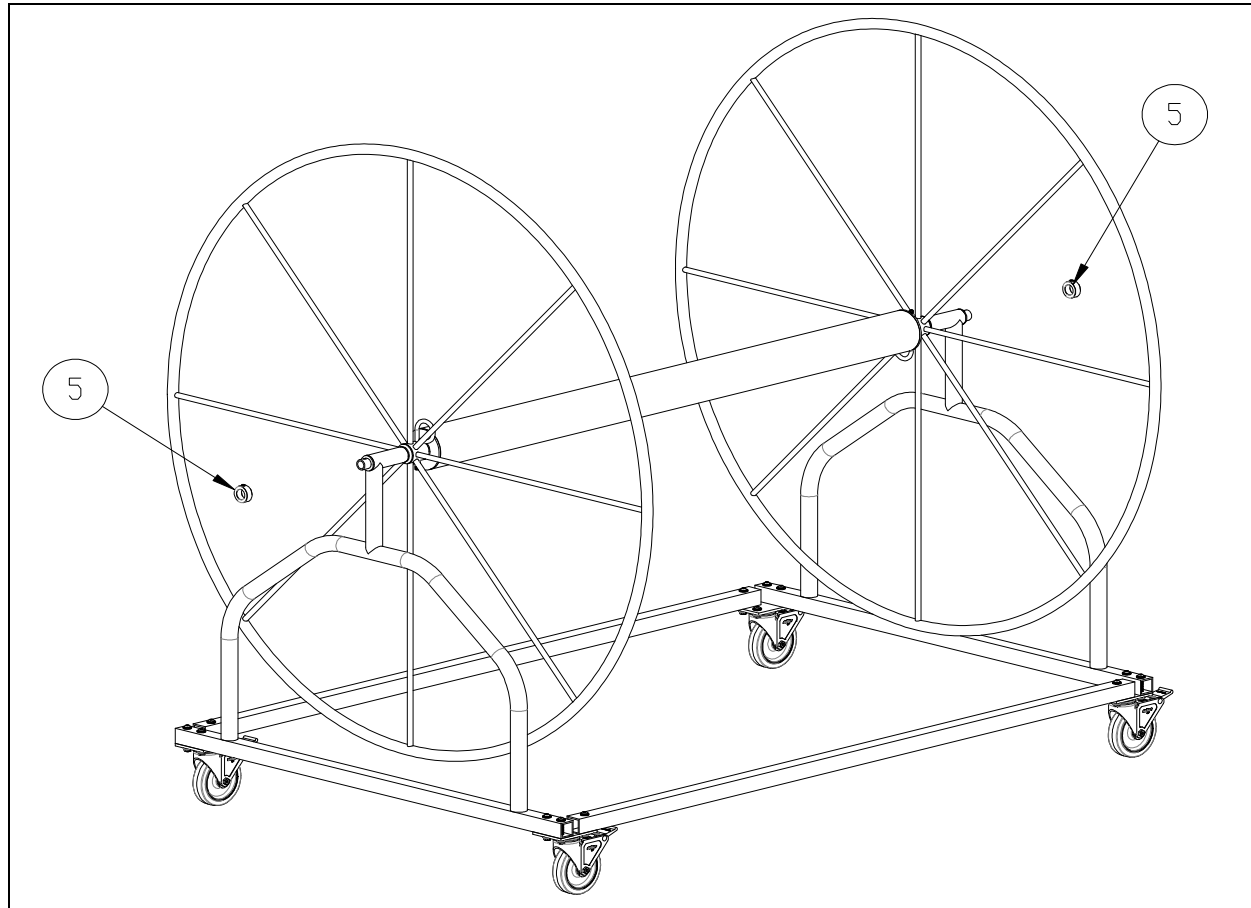
In three places through the square tube: 5/16" X 2 1/4" BHCS SS (11), 5/16" Flat Washer SS (13), 5/16" Nylon Washer (12) from the top through the square tube and plate, through the Caster (6), and 5/16" Lock Nut SS (14).

In one location through the plate only: 5/16" X 3/4" BHCS SS (10), 5/16" Flat Washer SS (13), 5/16" Nylon Washer SS (12) from the top through the plate, through the Caster (6), and 5/16" Lock Nut SS (14).

Repeat in 4 locations.

**REMEMBER TO USE ANTI-SEIZE WHENEVER ASSEMBLING STAINLESS STEEL HARDWARE.**





6) Finally, secure the Spool (3) by attaching the Nylon Shaft Collar (5) on both ends. The spindle arms of the Spool (3) each have a drilled hole to align the set screw from the Nylon Shaft Collar (5). Insure that these are aligned when installing the assembly.

## **ASSEMBLED XL CAPACITY LANE LINE REEL STRUCTURAL CHECKLIST**

- 1 Inspect all fasteners to make sure they are fully tightened.
- 2 Inspect the spool to insure that it spins freely
- 3 Apply each caster's brake independently to confirm that they each hold.
- 4 Move the reel in each direction to insure that nothing is impeding the casters rotation or roll.