

SR Smith™

MOVEABLE BULKHEAD

General Information & Technical Data





ENGINEERED FOR SUCCESS

Creating products that make the pool experience better is our singular focus. It means engineering product solutions that provide pool space maximisation to benefit every pool enthusiast: aquatic designers, pool contractors, service providers, facility managers, swim coaches and of course swimmers.

To find out more about other pool division products available from S.R.Smith, visit SRSMITH.COM

Bulkheads • Swimwall Systems™ • Moveable Floors • End Walls

SRSmith™

MOVEABLE BULKHEAD

PRODUCT OVERVIEW



The S.R.Smith Bulkhead offers swimming pool flexibility by separating a commercial pool into a variety of separate spaces for various aquatic programs and is used for FINA sanctioned short or long course swimming competitions. The Bulkhead can also be used to define water polo fields and allow officials a walking bridge along the playing field. For day-to-day operation, a Bulkhead provides separate areas for a wide variety of competitive and recreational aquatic activities.

Constructed with SR Smith's proprietary multi-axial fibre glass laminate schedule, the SR Smith bulkhead is engineered for superior strength to weight ratio, and ease of movement within the pool. Unlike modular bulkheads, the SR Smith bulkhead is manufactured in one-piece for maximum precision and rigidity.

KEY FEATURES

Durable fibreglass construction

Infused colour for longevity and minimal maintenance

Every Bulkhead is custom designed to suit the application

Myrtha pool compatible design

Anchor mounts to suit any model starting block

Designed with flow-through grating to reduce wave action

Accommodates electronic timing systems (Omega compatible)

Flow-through lane line channels, with flip up anchors for shorter lane line configurations

Anti-slip, UV and chemical resistant TrueTread™ on walking areas

Easily accessible timing cable tray built-in

Recessed continuous safety ledge

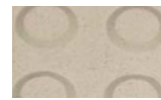
Safety systems available to prevent swimming underneath

Protective buffers prevent damage to tiles during movement

TOP TRACTION COLOUR OPTIONS



Black



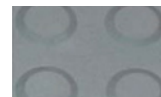
Ivory



Pacific Blue



Safety Yellow



Steel Grey



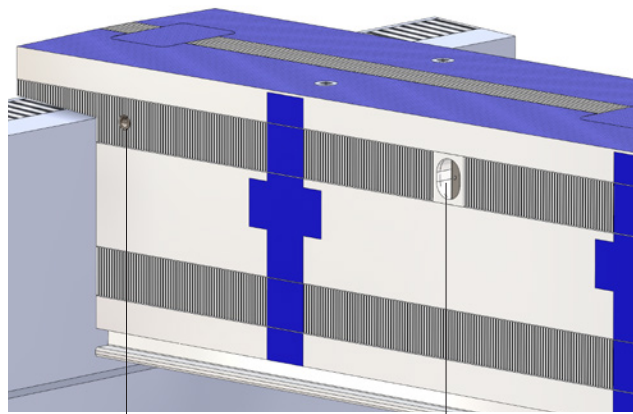
Terracotta

All colour requirements for the body of the bulkhead are matched to customer specifications and infused layers deep. Lane targets are made to precise FINA Specifications.

All side walls are produced with textured non-slip surfaces and the top surface is finished with UV and chemical resistant anti-slip TrueTread™.

LANE ROPE ANCHORING

Flip Down anchors create flow through channels allowing movement without removing lane lines

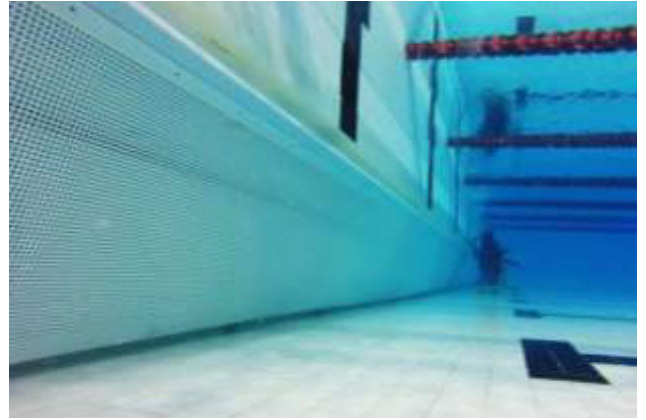


Fixed 316 stainless steel cup anchors for outside lanes

Flip Down, Flip Up pivoting anchor:
- 316 stainless steel anchoring plate
- included on both sides

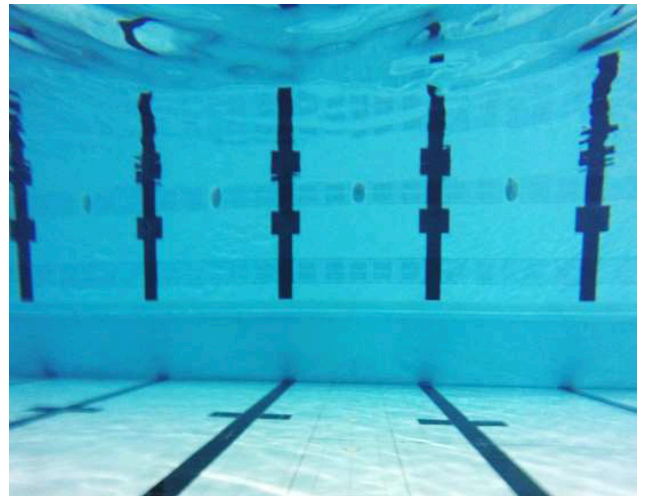
FOOT REST

Full length safety step both sides of boom at 1.2m from waterline. Closed surface with textured edge.

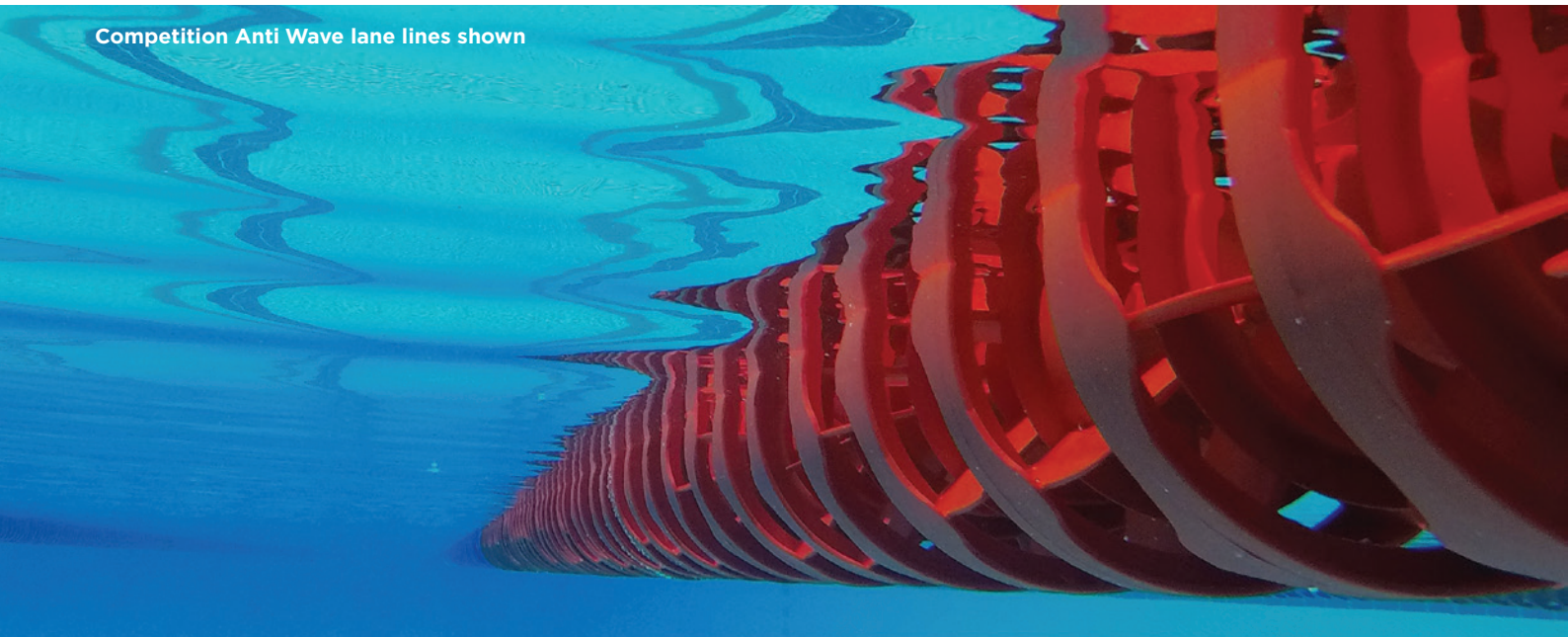


SAFETY BARRIER OPTION

Flexible vinyl coated nylon reinforced marine barrier.
- square or triangular form factor available



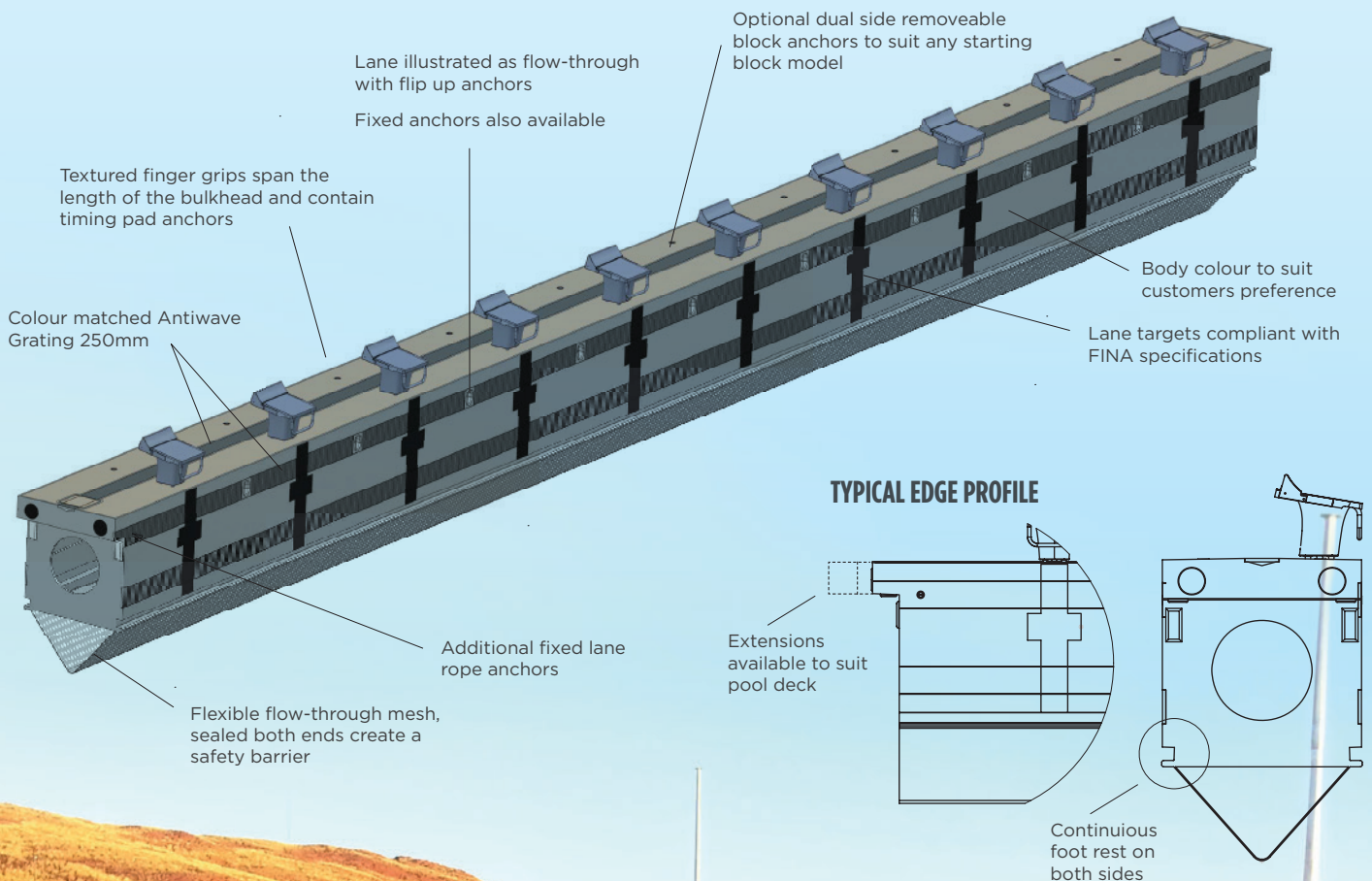
Competition Anti Wave lane lines shown



MOVEABLE BULKHEAD DESIGN AND TECHNICAL SPECIFICATIONS

Typical Design

Customised and precision engineered for each application, the S.R.Smith Pool Construction team provides a complete solution from design to manufacture, delivery and installation. Our proprietary method of fibreglass manufacturing produces Bulkheads that are exceptionally durable with an exterior that requires minimal maintenance. Attention to every detail in the process ensures a finished product that is precise in size, strength and user-friendly features.



Structural Specification*

The SRS Movable Bulkhead has a vertical safe working load of 18kN (which equates to 1835kg). When applied as a uniformly distributed load across the span of the 25m pool bulkhead, the bulkhead does not deflect more than the maximum required 25mm.

Under a transverse safe working load of 0.4kN uniformly distributed (9 lane ropes, totalling 3.6kN) over the total pool span, the bulkhead will not deflect more than the 10mm maximum requirement.

Typical dry weight – 4500 kg

4 x acetal resting pads – 0.15m²

Dead load (dry) – 0.294MPa

Movement

Manual Movement:

Includes high volume inflation pump

Easy access to air inlets

Custom hand rail designs available

Multiple air chambers with independent valves to ensure level inflation

Guide markers to prevent contact with wall



Motorised movement:

2 x Customised Electric Drive Pallet Jacks

Motors modified for predictable power delivery

Exceptional control options

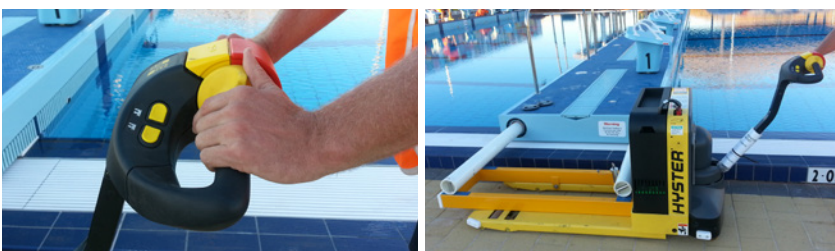
No interfering mechanisms for patrons entering or exiting bulkhead walkway

Ideal serviceability and storage

Jacks provide multi-purpose use around facility

Recorded 10 minute moves from endwall to 25m point

Includes manual inflation as backup movement system



Anchoring

Solid 316 stainless steel anchoring pin

Adjustable top plate for fine-tuning

38mm deck sockets

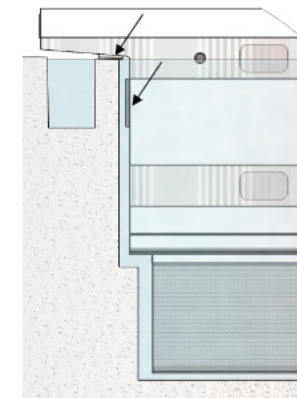


Pool Protection

Protective buffers prevent damage to pool deck and wall during movement

Custom wheel and buffer pad designs available

Guide markers assist bulkhead alignment during movement



*The strength capacities of a typical 25m SRS bulkhead have a reserve factor of 8-10 over and above the Factor of Safety in the vertical and transverse bending.

Timing Compatibility

Compatible with all major timing systems

Cable conduits and hatches incorporated into design
(no drilling or modifications required on site)

Flush mount touch pad inserts

Easy access cable tray



Installation

SR Smith's dedicated construction team manages every stage of the project including engaging with clients to assist with initial feasibility and budgeting, engineering design work, transport, delivery & installation and after sales support.



Warranty Statement

SR Smith warrants this bulkhead to be free of defects in material and workmanship under normal use, water chemistry, and service as follows:

Twenty five (25) years warranty on the bulkhead structure from the installation date.

The fibreglass components of this bulkhead are further warranted against delamination, osmosis and structural failure under normal use, water chemistry and service as follows:

Twenty five (25) years from the date of installation

This bulkhead is guaranteed, on completion of its installation, to move freely from one location to the other with the use of manual or motorised movement options.

All moving and mechanical parts including motorised movement, inflation components, anchoring and other moving parts within this system carry with them a twelve (12) month warranty from the date of installation.

The manufacturer's liability for such warranty including any consequential loss which a customer may suffer shall be limited to the repair of the bulkhead by the manufacturer or the manufacturer's agent.

This warranty shall not apply to any part of the bulkhead which has been subject to misuse, alteration, addition, substitution, malicious damage, abuse, accident, neglect in servicing or damage caused by the use of the customer of any defective or faulty accessory or product, or to damage caused by civil insurrection, fire, storm water, tempest or other extreme environmental factors.

For the purposes of this warranty the date of installation may be deemed to be the date of practical completion provided that the date of practical completion is no more than ninety (90) days after the date of installation.

There are no other warranties given by the manufacturer except those herein or implied by the law.

The above warranty may be rendered invalid by the manufacturer if the Bulkhead is found to have been operated by staff who have not undergone specific training in the contents of this manual and who have not been included in the register of training provided in this documentation.



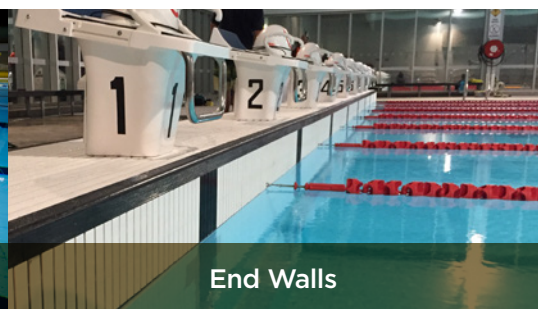
Other pool construction products available from S.R.Smith



Swimwall Systems™



Moveable Floors



End Walls

For product specifications, autoCADs and product configuration tools visit SRSMITH.COM

SERIOUS EQUIPMENT
SERIOUS FUN
ACCESS FOR ALL



SRS Australia Pty Ltd
12 Enterprise Street, Richlands Q 4077 Australia
PO Box 4416, Forest Lake Q 4078 Australia
P 07 3812 2283 | F 07 3812 1187
srsmith.com | info-au@srsmith.com