



DIVING BOARDS + STANDS

OFFICIAL
POOL
EQUIPMENT
SUPPLIER





Boards + Stands

CONTENTS

Overview	3	Salt Pool Jump System	9
Boards	4	Stands	10
Stands	5	T7 Jump System	16
True Tread	6	Board Part Numbers	18

Over 90 Years of Diving Experience

Quality, safety and selection are the hallmarks of S.R.Smith residential diving boards and stands. Available in a wide range of shapes, styles, and colors, our boards and stands are designed with varying degrees of flex and spring. Rigid stands or those that have a spring mechanism can be paired with a variety of boards with varying flex to create unique performance characteristics. Diving board and stand combinations are defined in two ways, according to their level of flex:

Jump Boards – a flexible board on a base that utilizes a spring mechanism.

Diving Boards – a flexible board on a rigid base.

New or Replacement?

While all of our diving boards can be installed on new pool decks, providing they meet safety standards, we also have replacement diving board options. A wide variety of our stands utilize the same jig, so upgrading your stand is simple. Refer to our jig identification guide on page 63. If a new jig is required for the new stand, you can drill holes in the deck and secure a new jig with one of our epoxy kits.

Salt Pool Friendly

All S.R.Smith diving boards are salt pool friendly. Select stands also perform well in salt pool environments.



Boards

Whether it's placing a brand new diving board and stand on a pool deck, or updating a well-loved diving board, S.R.Smith® has an option that will delight builders and pool owners alike. The diving experience is at the very heart of backyard pools, and S.R.Smith is creating new, exciting options to help ensure diving boards continue to be a centerpiece of swimming pool fun and memories.



TrueTread®

This diving board features a durable, marine-grade composite surface. Available in blue, red, gray and tan.



Fibre-Dive Board

Fiberglass reinforced core, acrylic shell with flexible outer edge, matte backside, non-slip sanded tread.



Frontier II Board

Fiberglass reinforced core, acrylic shell with flexible outer edge, matte backside, non-slip sanded tread.



Frontier III Board

Fiberglass reinforced core, acrylic shell with flexible outer edge, matte backside, non-slip sanded tread.



Frontier IV Board*

Fiberglass reinforced core, acrylic shell with flexible outer edge, matte backside, non-slip sanded tread.

* Frontier IV boards require a special stand

SPECIALTY JUMP SYSTEMS



T7 JUMP BOARD SYSTEMS

Manufactured from composite materials and the only 7' board on the market. Available in unique colors and visual textures to match our Destination Series In-Pool Furniture and Custom Slides.

Boards	Bolt Pattern	Available Lengths	Weight Limit
TrueTread	2-hole, 12" O.C.	6', 8'	250 lbs
Fibre-Dive	2-hole, 12" O.C.	6', 8' & 10'	250 lbs
Frontier II	3-hole	6' & 8'	250 lbs
Frontier III	2-hole, 12" O.C.	6', 8' & 10'	250 lbs
Frontier IV	2-hole, 11" O.C.	8'	400 lbs
T7	2-hole, 12" O.C.	7'	300 lbs

Stands

JUMP BOARD SYSTEMS:

a flexible board on a base that utilizes a spring mechanism

DIVING BOARD SYSTEMS:

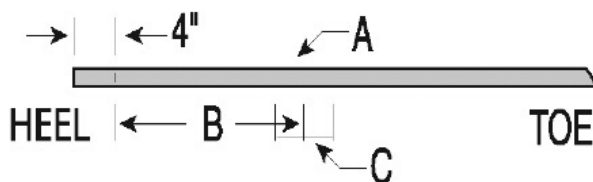
a flexible board on a rigid base

BOARD & STAND SELECTOR					
STANDS	TYPE	SALT FRIENDLY	JUMP BOARD SYSTEMS	DIVING BOARD	
COMPATIBLE BOARDS & PERFORMANCE CATEGORY					
MOST FLEXIBLE	Salt Pool Jump System	Jump Stand: Acrylic Reinforced Fiberglass	✓	TrueTread, Frontier III	
	Cantilever	Jump Stand: Acrylic Reinforced Fiberglass		TrueTread, Frontier III	
	Supreme	Jump Stand: Acrylic Reinforced Fiberglass	✓	TrueTread, Frontier III	
	Frontier II	Jump Stand: Powder-coated Steel		Frontier II	
	T7 Jump System	Jump Stand: Acrylic Reinforced Fiberglass	✓	T7 (optional board fall ordered separately)	
LEAST FLEXIBLE	U-Frame	Dive Stand: Stainless-Steel Tubing	✓	TrueTread, Fibre-Dive, Frontier III, Frontier IV*	
	Flyte-Deck II	Dive Stand: Acrylic Reinforced Fiberglass	✓	TrueTread*, Frontier III, Fibre-Dive	

*Frontier IV boards require a special stand, see page 18 for additional information.

Fulcrum Settings for Diving Boards

A	Board	6'	8'	10'	12'	14'	16'
B	Fulcrum	30"	40"	52"	62"	74"	86"
C	Tolerance	±3"	±4"	±5"	±6"	±6"	±6"



Diving Boards must be installed with rubber fulcrum pads*. Fulcrum settings beyond the stated tolerance **void the warranty**. Diving boards must be installed level across fulcrum and heel supports. Rubber mounting pads (washers) must be installed. Tightening Schedule can be found in the product's instruction manual.

* Except Frontier II



TRUETREAD

REINVENTING THE DIVING BOARD

S.R.Smith has reinvented the diving board category with a unique, proprietary design: **the TrueTread® Diving Board Series.** These stylish diving boards make an old favorite new again with a modern, sporty look that provides an exceptional launching grip. TrueTread is a durable, marine-grade composite material that stands up to salt, sun and hours of fun. Compatible with multiple S.R.Smith stands, TrueTread Diving Boards are an ideal upgrade that makes the diving board experience new again.

For more information, visit [SRSmith.com/TrueTread](https://www.SRSmith.com/TrueTread)

TrueTread® Diving Board Series



- Ideal replacement board, provides fresh, custom look
- Available in 6' and 8' lengths
- Modern, sporty look
- Long-lasting, durable anti-slip surface

COLOR OPTIONS



Due to printing technology actual color may differ.

All TrueTread colors are available on white stands, with gray and tan available on complementary earth tone stand colors.

COMPATIBLE WITH:

- Cantilever
- Flyte-Deck II
- Salt Pool Jump System
- Supreme
- U-Frame

RECOMMENDED BOARD AND STAND COMBINATIONS

FLYTE-DECK II STAND WITH TRUETREAD BOARD

Description	Board	Stand w/ Jig
Box 1 (Board) - 55 lbs - 80" L x 20" W x 3" H		
Box 2 (Stand) - 27 lbs - 37" L x 19" W x 13" H	SHIPPING CLASS 70	
White Stand & 6' Board w/ Tan TrueTread	66-209-576S2T	70-209-7362
White Stand & 6' Board w/ Blue TrueTread	66-209-576S2B	70-209-7362
White Stand & 6' Board w/ Gray TrueTread	66-209-576S2G	70-209-7362
White Stand & 6' Board w/ Red TrueTread	66-209-576S2R	70-209-7362
Taupe Stand & 6' Board w/ Tan TrueTread	66-209-576S10T	70-209-73610
Gray Stand & 6' Board w/ Gray TrueTread	66-209-576S20G	70-209-73620
Box 1 (Board) - 72 lbs - 105" L x 20" W x 3" H		
Box 2 (Stand) - 32 lbs - 48" L x 19" W x 13" H	SHIPPING CLASS 70	
White Stand & 8' Board w/ Tan TrueTread	66-209-578S2T	70-209-7382
White Stand & 8' Board w/ Blue TrueTread	66-209-578S2B	70-209-7382
White Stand & 8' Board w/ Gray TrueTread	66-209-578S2G	70-209-7382
White Stand & 8' Board w/ Red TrueTread	66-209-578S2R	70-209-7382
Taupe Stand & 8' Board w/ Tan TrueTread	66-209-578S10T	70-209-73810
Gray Stand & 8' Board w/ Gray TrueTread	66-209-578S20G	70-209-73820

TRUETREAD BOARD W/ SALT POOL JUMP SYSTEM, JIG, SPRINGS & HARDWARE

Description	Board	Stand w/ Jig	Spring
Box 1 (Board) - 55 lbs - 80" L x 19" W x 3" H			
Box 2 (Stand) - 26 lbs - 25" L x 20" W x 11" H			
Box 3 (Spring) - 11 lbs - 41" L x 5" W x 3" H	SHIPPING CLASS 70		
White Stand & 6' Board w/ Tan TrueTread	66-209-576S2T	69-209-62	69-209-662
White Stand & 6' Board w/ Blue TrueTread	66-209-576S2B	69-209-62	69-209-662
White Stand & 6' Board w/ Gray TrueTread	66-209-576S2G	69-209-62	69-209-662
White Stand & 6' Board w/ Red TrueTread	66-209-576S2R	69-209-62	69-209-662
Taupe Stand & 6' Board w/ Tan TrueTread	66-209-576S10T	69-209-610	69-209-6610
Gray Stand & 6' Board w/ Gray TrueTread	66-209-576S20G	69-209-620	69-209-6620
Box 1 (Board) - 72 lbs - 98" L x 20" W x 3" H			
Box 2 (Stand) - 26 lbs - 25" L x 20" W x 11" H			
Box 3 (Spring) - 15 lbs - 49" L x 5" W x 3" H	SHIPPING CLASS 70		
White Stand & 8' Board w/ Tan TrueTread	66-209-578S2T	69-209-62	69-209-682
White Stand & 8' Board w/ Blue TrueTread	66-209-578S2B	69-209-62	69-209-682
White Stand & 8' Board w/ Gray TrueTread	66-209-578S2G	69-209-62	69-209-682
White Stand & 8' Board w/ Red TrueTread	66-209-578S2R	69-209-62	69-209-682
Taupe Stand & 8' Board w/ Tan TrueTread	66-209-578S10T	69-209-610	69-209-6810
Gray Stand & 8' Board w/ Gray TrueTread	66-209-578S20G	69-209-620	69-209-6820



Salt Pool Jump System



Resist corrosion with this new low-profile fiberglass-backed stand and composite spring assembly designed to perform well even in harsh pool environments.

- 6' or 8' lengths
- Available in three designer colors to match your backyard décor
- Stainless-steel hardware for added corrosion resistance
- Can be retrofitted onto existing 606/608 Cantilever jigs*



Stand & Spring Colors



WHITE



TAUPE



PEWTER GRAY

Due to printing technology actual color may differ.

*All installations must comply with all applicable local and national codes and installation must be completed in accordance with S.R.Smith installation instructions.

SALT FRIENDLY JUMP STAND WITH FRONTIER III BOARD

Description	Board	Stand w/ Jig	Spring
6' BOARDS SHIPPING CLASS 70			
6' White Stand & Board	66-209-596S2	69-209-62	69-209-662
6' Taupe Stand & Board	66-209-596S10T	69-209-610	69-209-6610
6' Pewter Gray Stand & Board	66-209-596S20T	69-209-620	69-209-6620
8' BOARDS SHIPPING CLASS 70			
8' White Stand & Board	66-209-598S2	69-209-62	69-209-682
8' Taupe Stand & Board	66-209-598S10T	69-209-610	69-209-6810
8' Pewter Gray Stand & Board	66-209-598S20T	69-209-620	69-209-6820

6' BOARDS SHIPPING (CLASS 70)

	Weight	Length	Width	Height
Board	52 lbs / 24 kg	74" / 188 cm	20" / 51 cm	3" / 8 cm
Stand	27 lbs / 12 kg	25" / 64 cm	20" / 51 cm	11" / 28 cm
Spring	10 lbs / 4 kg	40" / 102 cm	5" / 13 cm	3" / 8 cm

8' BOARDS SHIPPING (CLASS 70)

	Weight	Length	Width	Height
Board	70 lbs / 32 kg	98" / 246 cm	20" / 51 cm	3" / 8 cm
Stand	27 lbs / 12 kg	25" / 64 cm	20" / 51 cm	11" / 28 cm
Spring	14 lbs / 6 kg	48" / 122 cm	5" / 13 cm	3" / 8 cm

Compatible with:



TrueTread® Board



Frontier III Board

Flyte-Deck II Stand



The Flyte-Deck II stand's sleek appearance and sturdy construction make it one of our best selling models.

- Made of durable, scratch-resistant acrylic reinforced with fiberglass
- 6', 8' or 10' lengths – find the right size for your diving pool
- Available in a variety of colors to match your poolscape and backyard décor!
- Stainless-steel hardware for added corrosion resistance
- Board has a matching, non-slip sanded tread, white



Board + Stand Colors



Due to printing technology actual color may differ.

Due to differences in material and textures, Gray Granite Diving Boards and Stands are not an exact color match to Gray Granite Slides. Please consult your S.R.Smith sales representative for more details.

All installations must comply with all applicable local and national codes and installation must be completed in accordance with S.R.Smith installation instructions.

Compatible with:



TrueTread® Board



Fibre-Dive Board



Frontier III Board

FLYTE-DECK II STAND WITH FIBRE-DIVE BOARD FOR MATCHING TREAD, ADD "T" BEHIND PART NUMBER

Description	Board	Stand w/ Jig
6' White	66-209-266S2-1	70-209-7362
6' Taupe	66-209-266S10T	70-209-73610
6' Pewter Gray	66-209-266S20T	70-209-73620
6' Pebble Gray	66-209-266S23	70-209-73623
6' Silver Gray	66-209-266S21T	70-209-73621
6' Gray Granite	66-209-266S24	70-209-73624
8' White	66-209-268S2-1	70-209-7382
8' Taupe	66-209-268S10T	70-209-73810
8' Pewter Gray	66-209-268S20T	70-209-73820
8' Pebble	66-209-268S23	70-209-73823
8' Gray Granite	66-209-268S24	70-209-73824
10' White	66-209-270S2-1	70-209-7402
10' Pewter Gray	66-209-270S20T	70-209-74020

Board, and stand are matching in color. Pebble and Gray Granite boards come with clear tread.

ACCESSORIES

Part No.	Description
71-209-710-SS	6' & 8' Flyte Deck Stand Bolt Kit
71-209-710-SS	610 Flyte Deck Stand Bolt Kit

Supreme (656/658) Stand



The Supreme stand is a high-end stand that offers users extreme diving fun!

- Made of durable, scratch resistant acrylic reinforced with fiberglass
- 6' or 8' lengths
- Available in a variety of colors - match your pool slide and backyard décor
- Stainless-steel hardware for added corrosion resistance
- Board has a matching, non-slip sanded tread

Board + Stand Colors



Due to printing technology actual color may differ.

Due to differences in material and textures, Gray Granite Diving Boards and Stands are not an exact color match to Gray Granite Slides. Please consult your S.R.Smith sales representative for more details.

All installations must comply with all applicable local and national codes and installation must be completed in accordance with S.R.Smith installation instructions.

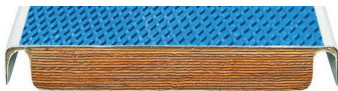
SUPREME JUMP STAND WITH FRONTIER III BOARD FOR MATCHING TREAD, ADD "T" BEHIND PART NUMBER

Description	Stand w/ Jig	Board	Spring
6' White	69-209-008	66-209-596S2	69-209-026
6' Taupe	69-209-008	66-209-596S10	69-209-026
6' Pewter Gray	69-209-008	66-209-596S20	69-209-026
6' Silver Gray	69-209-008	66-209-596S21	69-209-026
6' Marine Blue	69-209-008	66-209-596S3	69-209-026
6' Pebble*	69-209-008-SNST	66-209-596S23	69-209-026-TP
6' Gray Granite*	69-209-008-GG	66-209-596S24	69-209-026-RG
8' White	69-209-008	66-209-598S2	69-209-028
8' Taupe	69-209-008	66-209-598S10	69-209-028
8' Pewter Gray	69-209-008	66-209-596S20	69-209-028
8' Silver Gray	69-209-008	66-209-596S21	69-209-028
8' Marine Blue	69-209-008	66-209-596S3	69-209-028
8' Pebble*	69-209-008-SNST	66-209-596S23	69-209-028-TP
8' Gray Granite*	69-209-008-GG	66-209-596S24	69-209-028-RG

Kits with white stand include white springs. For matching springs, please contact Customer Service at 800.824.4387.

*Pebble kits come with Taupe springs. Gray Granite kits come with Rock Gray springs. Pebble and Gray Granite boards come with clear tread.

Compatible with:

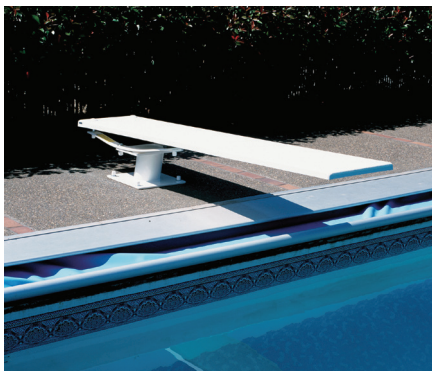


TrueTread Board



Frontier III Board

Cantilever (606/608) Stand



- Powder-coated for increased corrosion resistance
- 6' or 8' lengths
- Available in designer colors to match your pool slide and backyard décor
- Stainless-steel hardware for added corrosion resistance
- Board has a matching non-slip sanded tread
- Salt Pool Jump System can be retrofitted on a Cantilever jig

CANTILEVER JUMP STAND WITH FRONTIER III BOARD 6' BOARDS SHIPPING CLASS 70

Box 1 (Board): 52 lbs / 24 kg - 74" / 188 cm L x 20" / 51 cm W x 3" / 8 cm H
 Box 2 (Stand): 60 lbs / 27 kg - 16" / 41 cm L x 14" / 66 cm W x 12" / 30 cm H
 Box 3 (Spring): 20 lbs / 9 kg - 33" / 84 cm L x 18" / 46 cm W x 4" / 10 cm H

Description	Board	Stand w/ Jig	Spring
6' White	66-209-596S2	69-209-001	69-209-026
6' Taupe	66-209-576S2B	69-209-001	69-209-026
6' Silver Gray	66-209-576S2G	69-209-001	69-209-026
6' Pebble	66-209-576S2R	69-209-001-TP	69-209-026-TP
6' Gray Granite	66-209-576S10T	69-209-001-RG	69-209-026-RG

All Kits come with matching Springs. Pebble kits come with Taupe springs. Gray Granite kits come with Rock Gray springs. Pebble and Gray Granite boards come with clear tread.

8' BOARDS SHIPPING CLASS 70

Box 1 (Board): 52 lbs / 24 kg - 74" / 188 cm L x 20" / 51 cm W x 3" / 8 cm H
 Box 2 (Stand): 60 lbs / 27 kg - 16" / 41 cm L x 14" / 66 cm W x 12" / 30 cm H
 Box 3 (Spring): 33 lbs / 15 kg - 41" / 104 cm L x 18" / 46 cm W x 4" / 10 cm H

Description	Board	Stand w/Jig	Spring
8' White	66-209-598S2	69-209-001	69-209-028
8' Taupe	66-209-598S10	69-209-001	69-209-028
8' Silver Gray	66-209-598S21	69-209-001	69-209-028
8' Pebble	66-209-598S23	69-209-001-TP	69-209-028-TP
8' Gray Granite	66-209-598S24	69-209-001-RG	69-209-028-RG

All Kits come with matching Springs. Pebble kits come with Taupe springs. Gray Granite kits come with Rock Gray springs. Pebble and Gray Granite boards come with clear tread.

Stand Colors



Board Colors



Due to printing technology actual color may differ.

Due to differences in material and textures, Gray Granite Diving Boards and Stands are not an exact color match to Gray Granite Slides. Please consult your S.R.Smith sales representative for more details.

All installations must comply with all applicable local and national codes and installation must be completed in accordance with S.R.Smith installation instructions.

Compatible with:

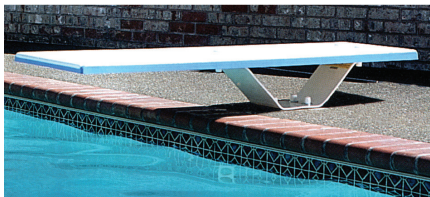


TrueTread® Board



Frontier III Board

Frontier II Stand



The Frontier II is a high-value stand and board ideal for price-sensitive customers.

- Made of strong steel and powder-coated white for increased corrosion resistance
- 6' or 8' lengths
- Stand comes in white, with your choice of board color to match your pool slide and backyard décor
- Stainless-steel hardware for added corrosion resistance
- Board has a matching non-slip sanded tread

Stand Color

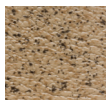


WHITE

Board Colors



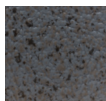
WHITE



PEBBLE



TAUPE



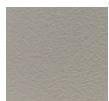
GRAY GRANITE



PEWTER GRAY



BLUE



SILVER GRAY

Due to printing technology actual color may differ.

Due to differences in material and textures, Gray Granite Diving Boards and Stands are not an exact color match to Gray Granite Slides. Please consult your S.R.Smith sales representative for more details.

All installations must comply with all applicable local and national codes and installation must be completed in accordance with S.R.Smith installation instructions.

Compatible with:



Frontier II Board

See page 18-19 for diving board part numbers.

FRONTIER II JUMP STAND WITH FRONTIER II BOARD* 6' BOARDS SHIPPING CLASS 70

Box 1 (Board): 52 lbs / 24 kg - 74" / 188 cm L x 20" / 51 cm W x 3" / 8 cm H
Box 2 (Stand): 27 lbs / 12 kg - 34" / 86 cm L x 8" / 20 cm W x 8" / 20 cm H

Description	Board	Stand w/Jig
6' White	66-209-586S2	69-209-5866
6' Taupe	66-209-586S10	69-209-5866
6' Pewter Gray	66-209-586S20	69-209-5866
6' Silver Gray	66-209-586S21	69-209-5866
6' Marine Blue	66-209-586S3	69-209-5866
6' Pebble	66-209-586S23	69-209-5866
6' Gray Granite	66-209-586S24	69-209-5866

*Not recommended for salt pools or decks with pavers. All kits have White Stand. Pebble and Gray Granite boards come with clear tread.

FRONTIER II JUMP STAND WITH FRONTIER II BOARD* 8' BOARDS SHIPPING CLASS 70

Box 1 (Board): 70 lbs / 32 kg - 98" / 249 cm L x 20" / 51 cm W x 3" / 8 cm H
Box 2 (Stand): 34 lbs / 15 kg - 41" / 104 cm L x 9" / 23 cm W x 7" / 18 cm H

Description	Board	Stand w/ Jig
8' White	66-209-588S2	69-209-5888
8' Taupe	66-209-588S10	69-209-5888
8' Pewter Gray	66-209-588S20	69-209-5888
8' Silver Gray	66-209-588S21	69-209-5888
8' Marine Blue	66-209-588S3	69-209-5888
8' Pebble	66-209-588S23	69-209-5888
8' Gray Granite	66-209-588S24	69-209-5888

*Not recommended for salt pools or decks with pavers. All kits have White Stand. Pebble and Gray Granite boards come with clear tread.

FRONTIER II BASES & JIG

Part No.	Description	Shipping (Class 70)			
		Weight	Length	Width	Height
69-209-5866	6' Spring Base only	26.5 lbs 12kg	34" 86cm	8" 20cm	8" 20cm
69-209-5888	8' Spring Base only	34 lbs 15kg	41" 104cm	9" 23cm	7" 18cm
69-209-227-SS	Jig only (included with base)	3 lbs 1kg	7" 18cm	7" 18cm	7" 18cm

U-Frame Stand



The U-Frame stand is a great entry-level stand, ideal for price-sensitive users.

- Made of 1.90" OD, .049" or .065" wall, 304 or 316L stainless-steel tubing, and includes a slip-on rubber fulcrum
- Choose from a variety of board colors to match your pool slide and backyard décor
- Pair with 6', 8', 10' or 12' boards

Stand Color



POLISHED STEEL

Due to printing technology actual color may differ.

All installations must comply with all applicable local and national codes and installation must be completed in accordance with S.R.Smith installation instructions.

Stand Part No.	Description	Board Size	Shipping (Class 85)			
			Weight	Length	Width	Height
UF-12-100	12" U-Frame (.049)	6' or 8'	14 lbs 6kg	33" 84cm	25" 64cm	2" 5cm
UF-14-101	14" U-Frame (.049)	6' or 8'	16 lbs 7.2kg	33" 84cm	25" 64cm	2" 5cm
UF-18-101	18" U-Frame (.049)	6' or 8'	16 lbs 7.2kg	33" 84cm	25" 64cm	2" 5cm
UF-18-102	18" U-Frame (.065)	6' or 8'	18 lbs 8.1kg	34" 86cm	31" 79cm	2" 5cm
UF-24-103	24" U-Frame (.049)	10' or 12'	16 lbs 7.2kg	34" 86cm	31" 79cm	2" 5cm
UF-24-102	24" U-Frame (.065)	10' or 12'	19 lbs 8.6kg	34" 86cm	31" 79cm	2" 5cm

- For Marine Grade (316L), add -MG to part number
- Boards are sold separately
- Not recommended for salt pools

Compatible with:



TrueTread® Board



Fibre-Dive Board



Frontier III Board



Frontier IV Board* (8' only)

U-FRAME WITH 8' FRONTIER IV BOARD

The special U-Frame Stand, designed specifically for our Frontier IV board, is a great alternative to consider for pools with heavy diving traffic and more athletic pool users.

- Mounting bolts are on 11" centers
- Frontier IV comes in white, with a matching non-slip sanded tread for maximum safety
- Made of 1.90"OD, .109 wall tubing, 304 or 316L stainless-steel tubing
- 400 lb. weight limit

Stand Part No.	Description	Board Size	Shipping (Class 85)			
			Weight	Length	Width	Height
UF-15-200	15" U-Frame only (.109)	8'	21 lbs 9kg	33" 84cm	25" 64cm	2" 5cm
66-209-4082	8' Frontier IV Board (board only)		75 lbs 34kg	105" 267cm	20" 51cm	3" 8cm



Part No.	Size
FC-100A-R	18"
FC-200A-R	20"

U-FRAME FULCRUM PAD

The Frontier IV board has 11" bolt centers and requires this SPECIAL U-Frame that will only work with this board.

- Heavy-duty rubber
- 18" or 20" long
- Accommodates 1.90" OD tubing



T7 Jump System



- Unique 7' diving board can be installed on Type I - Type V pools
- Durable, long-lasting fiberglass construction with advanced composite springs
- Advanced high-tech RTM manufacturing
- Optional board waterfall compatible base
- Variety of earth tones & granite colors available
- Suitable for use with salt systems
- Designed to match the landscape slide products or Destination Series in-pool furniture perfectly for a complete designer pool look
- 300 lb. weight limit



COLOR OPTIONS





T7 JUMP SYSTEM COMPONENTS

T7 SAND TREAD BOARD W/ MOUNTING HARDWARE

Comes with 7' Sand Tread Surface Board Only & Stainless-Steel Hardware. 300 lb Weight Limit

Part No.	Description	Shipping			
		Weight	Length	Width	Height
T7-DB-XX	Sand Tread Board & Hardware, [Pick Color]	55 lbs	87"	22"	9"

T7 BASE AND JIG WITH MOUNTING HARDWARE

T7 Base and Jig with Jig to Base Stainless-Steel Hardware

Part No.	Description	Shipping			
		Weight	Length	Width	Height
T7-NBASE-XX	T7 Base and Jig, [Pick Color]	27 lbs	30"	20"	10"

T7 BASE W/ MOUNTING HARDWARE - NO JIG

T7 Base with Stainless-Steel Mounting Hardware without Jig

Part No.	Description	Shipping			
		Weight	Length	Width	Height
T7-NBASE-XX-NJ	T7 Base, [Pick Color]	21 lbs	30"	20"	10"

T7 SPRINGS (PAIR) WITH MOUNTING HARDWARE

T7 Springs (pair) with Spring to Base Stainless-Steel Hardware

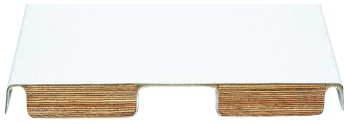
Part No.	Description	Shipping			
		Weight	Length	Width	Height
T7-NSPRING-3	Taupe (For Colors -51, -55, -57, -58 & -61)	27 lbs	47"	7"	8"
T7-NSPRING-9	Gray (For Colors -52, -54, -56 & -60)				

OPTIONAL WATERFALL ASSEMBLY KIT

Part No.	Description	Shipping			
		Weight	Length	Width	Height
BOARD-FALL	Includes: Board Fall, Mounting Hardware (4 Screws), 8' 4" of 1/2" Flex PVC Pipe, 1 Union	5 lbs	13"	12"	6"

Residential Board Part Numbers

- All part numbers shown are for a diving board with a white tread, unless noted.
- To order a diving board with a matching tread, add a "T" at the end of the part number.



FIBRE-DIVE BOARDS (2-HOLE)

Weight Limit = 250 lbs.

* Due to differences in material and textures, Gray Granite Diving Boards and Stands are not an exact color match to Gray Granite Slides. Please consult your S.R.Smith sales representative for more details.

Part No.	Size	Color	Shipping (Class 70)				
			Weight	Length	Width	Height	
66-209-266S2-1	6'	White	36 lbs / 16 kg	74" / 188 cm	20" / 51 cm	3" / 8 cm	
66-209-266S3-1	6'	Blue	36 lbs / 16 kg	74" / 188 cm	20" / 51 cm	3" / 8 cm	
66-209-266S10	6'	Taupe	36 lbs / 16 kg	74" / 188 cm	20" / 51 cm	3" / 8 cm	
66-209-266S20	6'	Pewter Gray	36 lbs / 16 kg	74" / 188 cm	20" / 51 cm	3" / 8 cm	
66-209-266S23	6'	Pebble w/ Clear Tread	36 lbs / 16 kg	74" / 188 cm	20" / 51 cm	3" / 8 cm	
66-209-266S24	6'	Gray Granite w/ Clear Tread	36 lbs / 16 kg	74" / 188 cm	20" / 51 cm	3" / 8 cm	
66-209-268S2-1	8'	White	59 lbs / 27 kg	98" / 249 cm	20" / 51 cm	3" / 8 cm	
66-209-268S3-1	8'	Blue	59 lbs / 27 kg	98" / 249 cm	20" / 51 cm	3" / 8 cm	
66-209-268S10	8'	Taupe	59 lbs / 27 kg	98" / 249 cm	20" / 51 cm	3" / 8 cm	
66-209-268S20	8'	Pewter Gray	59 lbs / 27 kg	98" / 249 cm	20" / 51 cm	3" / 8 cm	
66-209-268S23	8'	Pebble w/ Clear Tread	59 lbs / 27 kg	98" / 249 cm	20" / 51 cm	3" / 8 cm	
66-209-268S24	8'	Gray Granite w/ Clear Tread	59 lbs / 27 kg	98" / 249 cm	20" / 51 cm	3" / 8 cm	
66-209-270S2-1	10'	White	75 lbs / 34 kg	122" / 310 cm	20" / 51 cm	3" / 8 cm	
66-209-270S3-1	10'	Blue	75 lbs / 34 kg	122" / 310 cm	20" / 51 cm	3" / 8 cm	
66-209-270S10	10'	Taupe	75 lbs / 34 kg	122" / 310 cm	20" / 51 cm	3" / 8 cm	DISC
66-209-270S20	10'	Pewter Gray	75 lbs / 34 kg	122" / 310 cm	20" / 51 cm	3" / 8 cm	



FRONTIER II BOARDS (3-HOLE)

Weight Limit = 250 lbs.

Part No.	Size	Color	Shipping (Class 70)			
			Weight	Length	Width	Height
66-209-586S2	6'	White	52 lbs / 24 kg	74" / 188 cm	20" / 51 cm	3" / 8 cm
66-209-586S3	6'	Blue	52 lbs / 24 kg	74" / 188 cm	20" / 51 cm	3" / 8 cm
66-209-586S10	6'	Taupe	52 lbs / 24 kg	74" / 188 cm	20" / 51 cm	3" / 8 cm
66-209-586S20	6'	Pewter Gray	52 lbs / 24 kg	74" / 188 cm	20" / 51 cm	3" / 8 cm
66-209-586S23	6'	Pebble w/ Clear Tread	52 lbs / 24 kg	74" / 188 cm	20" / 51 cm	3" / 8 cm
66-209-586S24	6'	Gray Granite w/ Clear Tread	52 lbs / 24 kg	74" / 188 cm	20" / 51 cm	3" / 8 cm
66-209-588S2	8'	White	70 lbs / 32 kg	98" / 249 cm	20" / 51 cm	3" / 8 cm
66-209-588S3	8'	Blue	70 lbs / 32 kg	98" / 249 cm	20" / 51 cm	3" / 8 cm
66-209-588S10	8'	Taupe	70 lbs / 32 kg	98" / 249 cm	20" / 51 cm	3" / 8 cm
66-209-588S20	8'	Pewter Gray	70 lbs / 32 kg	98" / 249 cm	20" / 51 cm	3" / 8 cm
66-209-588S23	8'	Pebble w/ Clear Tread	70 lbs / 32 kg	98" / 249 cm	20" / 51 cm	3" / 8 cm
66-209-588S24	8'	Gray Granite w/ Clear Tread	70 lbs / 32 kg	98" / 249 cm	20" / 51 cm	3" / 8 cm

NOTE: If replacing a board you must replace the fulcrum pad. Failure to do so will void warranty.



FRONTIER III BOARDS (2-HOLE)

Weight Limit = 250 lbs.

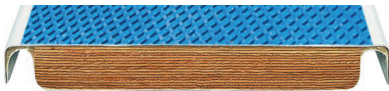
Part No.	Size	Color	Shipping (Class 70)			
			Weight	Length	Width	Height
66-209-596S2	6'	White	52 lbs / 24 kg	74" / 188 cm	20" / 51 cm	3" / 8 cm
66-209-596S3	6'	Blue	52 lbs / 24 kg	74" / 188 cm	20" / 51 cm	3" / 8 cm
66-209-596S10	6'	Taupe	52 lbs / 24 kg	74" / 188 cm	20" / 51 cm	3" / 8 cm
66-209-596S20	6'	Gray	52 lbs / 24 kg	74" / 188 cm	20" / 51 cm	3" / 8 cm
66-209-596S23	6'	Silver Gray	52 lbs / 24 kg	74" / 188 cm	20" / 51 cm	3" / 8 cm
66-209-596S24	6'	Pebble w/ Clear Tread	52 lbs / 24 kg	74" / 188 cm	20" / 51 cm	3" / 8 cm
66-209-596S23	6'	Gray Granite w/ Clear Tread	52 lbs / 24 kg	74" / 188 cm	20" / 51 cm	3" / 8 cm
66-209-598S2	8'	White	70 lbs / 32 kg	98" / 249 cm	20" / 51 cm	3" / 8 cm
66-209-598S3	8'	Blue	70 lbs / 32 kg	98" / 249 cm	20" / 51 cm	3" / 8 cm
66-209-598S10	8'	Taupe	70 lbs / 32 kg	98" / 249 cm	20" / 51 cm	3" / 8 cm
66-209-598S20	8'	Gray	70 lbs / 32 kg	98" / 249 cm	20" / 51 cm	3" / 8 cm
66-209-598S23	8'	Silver Gray	70 lbs / 32 kg	98" / 249 cm	20" / 51 cm	3" / 8 cm
66-209-598S24	8'	Pebble w/ Clear Tread	70 lbs / 32 kg	98" / 249 cm	20" / 51 cm	3" / 8 cm
66-209-598S23	8'	Gray Granite w/ Clear Tread	70 lbs / 32 kg	98" / 249 cm	20" / 51 cm	3" / 8 cm
66-209-600S2	10'	White	85 lbs / 38 kg	122" / 310 cm	20" / 51 cm	3" / 8 cm
66-209-600S3	10'	Blue	85 lbs / 38 kg	122" / 310 cm	20" / 51 cm	3" / 8 cm
66-209-600S10	10'	Taupe	85 lbs / 38 kg	122" / 310 cm	20" / 51 cm	3" / 8 cm
66-209-600S20	10'	Gray	85 lbs / 38 kg	122" / 310 cm	20" / 51 cm	3" / 8 cm
66-209-600S21	10'	Silver Gray	85 lbs / 38 kg	122" / 310 cm	20" / 51 cm	3" / 8 cm



FRONTIER IV BOARDS (2-HOLE)

Weight Limit = 250 lbs.

Part No.	Size	Color	Shipping (Class 70)			
			Weight	Length	Width	Height
66-209-408	8'	White	83 lbs / 38 kg	98" / 249 cm	20" / 51 cm	3" / 8 cm



TRUETREAD® BOARDS

6' Boards, Shipping Class 70 — 55 lbs, 80" L × 20" W × 3" H

Part No.	Description
66-209-576S2B	6' White Board w/ Blue TrueTread
66-209-576S2G	6' White Board w/ Gray TrueTread
66-209-576S2R	6' White Board w/ Red TrueTread
66-209-576S2T	6' White Board w/ Tan TrueTread
66-209-576S10T	6' Taupe Board w/ Tan TrueTread
66-209-576S20G	6' Gray Board w/ Gray TrueTread

8' Boards, Shipping Class 70 — 72 lbs, 105" L × 20" W × 3" H

Part No.	Description
66-209-576S2B	8' White Board w/ Blue TrueTread
66-209-576S2G	8' White Board w/ Gray TrueTread
66-209-576S2R	8' White Board w/ Red TrueTread
66-209-576S2T	8' White Board w/ Tan TrueTread
66-209-576S10T	8' Taupe Board w/ Tan TrueTread
66-209-576S20G	8' Gray Board w/ Gray TrueTread

MOUNTING KITS

Part No.	Description
67-209-911-SS	Residential Board - White
67-209-911-SS-PG	Residential Board - Gray
67-209-911-SS-TP	Residential Board - Taupe
69-209-032-SS	Frontier II Board

Part No.	Description
67-209-913-SS	Frontier IV Board
67-209-909-SS	Bolt Kit, Residential w/ (5) 5.5" Bolts
67-209-910-SS	Bolt Kit, Residential w/ (5) 5" Bolts



Pool Better™

A Fluidra Brand | SRSmith.com | 1.800.822.7933

©2024 Fluidra. All rights reserved. The trademarks and trade names used herein are the property of their respective owners. 98846_SL

